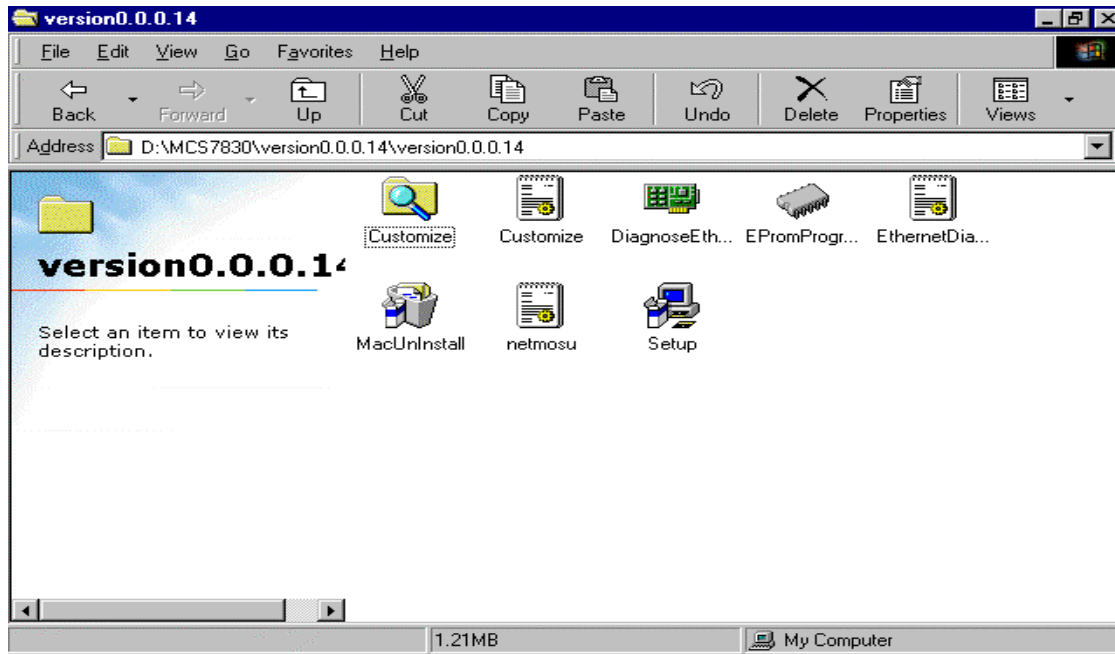


MCS7830 EProm & Diagnostics Utilities

1.Copy the MCS7830 Driver file onto your PC & unzip contents onto a new folder

2.You would find following contents in the new folder



3. Run MacUninstall application first to remove previously installed old drivers of MCS7830. (Follow OS calls for rebooting the system, Pls disconnect the MCS7830 Board from PC USB slot before running MacUninstall)

Run Setup.exe to install drivers for MCS7830. After running setup.exe EPROMPROGRAMMING & DIAGNOSEETHERNET shortcuts would be placed on desktop automatically by Setup application. (Customize option can be used to change vendor specific information before executing Setup, pls follow instructions given separately for Customize)

4. Device Detection : Plug in the MCS7830 board & confirm detection.

5. EPROMPROGRAMMING Utility:

Double click on EPROMPROGRAMMING icon on destop & following GUI appears:

The screenshot shows a Windows-style application window titled "USB-Ethernet Diagnostics & EEPROM Programming Utility". The window has a blue title bar and a light beige background. It is divided into several sections:

- Inputs for USB-Ethernet Configuration / Verification:** A section at the top containing a text box for "Vendor Name" with the value "MosChip Semiconductor Technology Ltd."
- Enter the Inputs:** A section below the vendor name containing:
 - A "Start Address" field consisting of six empty boxes separated by hyphens.
 - A "Device Count" field with a single empty box.
 - An "Overwrite Address" checkbox, which is checked.
- Last Successful Programmed Info:** A section containing:
 - A "Last Assigned Address" field consisting of six empty boxes separated by hyphens.
 - A "Last Device Count" field with a single empty box.
- Options:** Two columns of options.
 - Auto Options:** Contains two checked checkboxes: "Verify Ethernet Address" and "Ethernet Diagnostics".
 - Manual Options:** Contains two buttons: "Display Addresses" and "Ethernet Diagnostics".
- Instructions:** A text box at the bottom stating "Enter the Inputs and press 'Start' button."
- Buttons:** Two buttons at the very bottom: "Start" and "Exit".

Default settings can be set as explained in change settings document, Enter valid start address and the device count number in input option. Device count number depends upon the number of devices you want to program.

If we don't check the Overwrite Address option it asks for user intervention stating Abort, Retry, Ignore. Choose Ignore to overwrite the previous address.

Last Successful Programmed Info displays last assigned EPROM address and last device count.

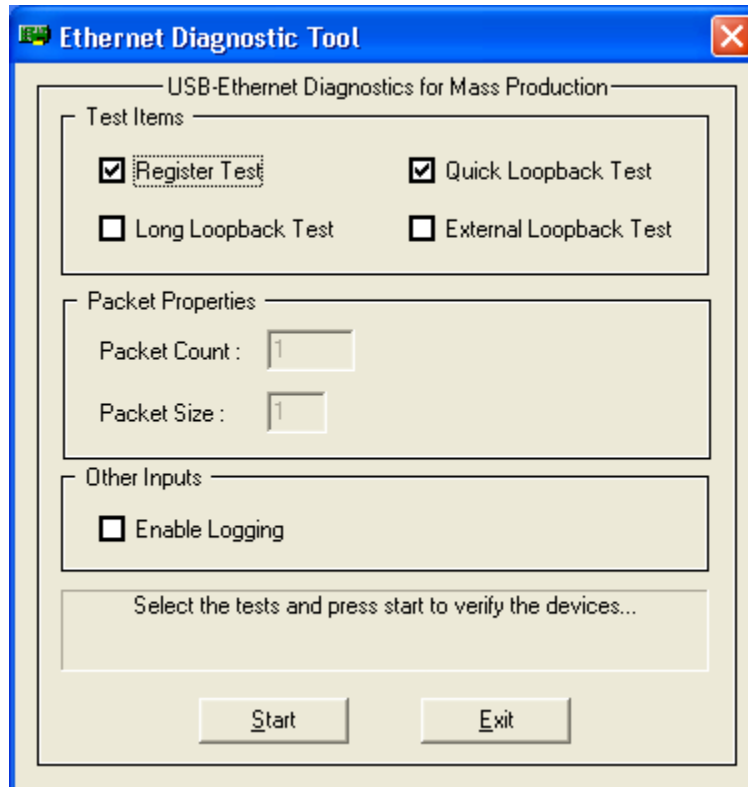
Auto options has two categories named Verify Ethernet Address & Ethernet Diagnostics. Checking the verify ethernet address automatically displays last configured EPROM address. Unchecking this option doesn't display last configured EPROM address.

We can also check the MAC address of any MCS7830 board by plugging in the board and clicking the option Display Addresses present in Manual options category.

We can run Ethernet Diagnostics through EPROM Utility also by selecting the option Ethernet Diagnostics.

6. Ethernet Diagnostic Tool:

Double click on DiagnoseEthernet icon on desktop to run the Diagnostics tests on MCS7830 board. Following GUI screen appears:



For running External loopback test , we need to use Loopback ETH cable in RJ45 socket of MCS7830 board (Ethernet cable in which TX+ is looped back to RX+ & TX- is looped back to RX-) . This test can't be done without Loopback connector.

Register test, Quick loopback test & Long loop back tests can be executed without External loopback connector. (Signals are looped back in side the MCS7830 ASIC in this condition)

Any questions on Utility can be addressed to ajnrao@moschip.com